



COASTAL RESOURCES INC.



Coastal Resources, Inc. (CRI) is a small, woman-owned business with over 40 years of experience providing natural resource assessment, design, and permitting services to public and private clients. We are centrally located to the Mid-Atlantic region in Annapolis, Maryland. For four decades, CRI's technical expertise and commitment to quality and responsiveness have earned us the respect of our clients, primes, and peers, making us a recognized leader in the natural resources field in the Mid-Atlantic region. As a firm, we are focused on a solution-oriented, collaborative approach to meet project goals while achieving full compliance with environmental protections and regulatory requirements. The trusted relationships we have built with our clients as well as regulators and resource managers have been key to the successful delivery of some of the region's biggest infrastructure projects.

Service Areas



Natural Resource Assessment, Documentation, and Permitting

- Environmental Planning, NEPA Documentation
- Waters of the U.S. Delineation and Assessment Services
- Permitting and Agency Coordination
- Tree and Forest Conservation Planning, Assessment, and Permitting
- Sensitive Species Surveys and Habitat Evaluations
- Environmental Training



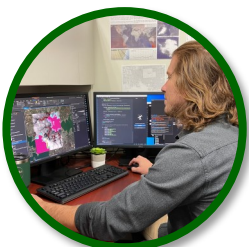
Aquatic Resources Monitoring

- Biomonitoring and Water Quality
- Estuarine Science and Ecology
- Environmental Training



Water Resources Engineering Assessment, Design, and Monitoring

- Watershed Assessment
- Stream Assessment, Restoration Design, and Monitoring
- Landscape Architecture
- Wetland Mitigation Design and Monitoring
- Water Resources Engineering
- Environmental Construction Inspection



Geographic Information Systems, Computer-Aided Design, and Data Analysis

- Database Development and Management
- Cartographic Production and Presentation
- Landscape, and Imagery Analysis
- Statistical Analysis

Certifications, including, but not limited to:

Federal

- Small Business Administration, Woman-Owned Small Business (WOSB)

State

- Maryland (MDOT MBE/DBE/SBE)
- Maryland SBR
- Maryland PE Firm
- Virginia (SWaM DBE/WBE)
- Virginia PE-LA Firm
- Delaware (DelDOT DBE)
- Delaware (OSD WBE)
- Pennsylvania (PAUCP DBE)

Local

- District of Columbia (DCUCP DBE/SBE)
- Anne Arundel County, MD (WBE)
- Baltimore County, MD (Prequalified)
- City of Baltimore, MD (WBE)
- Charles County, MD (MBE)
- Howard County, MD (EBO)
- Montgomery County, MD (MFD)
- Prince George's County, MD (MBE)
- Metropolitan Washington Airport Authority (MWAA LDBE)
- Washington Suburban Sanitary Commission (WSSC MBE)



Clients, including, but not limited to:

Federal: US Fish and Wildlife Service, National Park Service, US Army Corps of Engineers

State: MDOT (SHA, MTA, MDTA, MAA), Maryland Environmental Service, DelDOT, VDOT

Local/Private: DDOT, Anne Arundel, Baltimore, Carroll, Cecil, Charles, Frederick, Harford, Howard, Montgomery, Prince George's and Queen Anne's Counties, MD; Amtrak; DC Water; Maryland-National Capital Park and Planning Commission (M-NCPPC); Washington Suburban Sanitary Commission (WSSC); Metropolitan Washington Airports Authority (MWAA); Exelon Corporation; Washington Gas; Columbia Gas; Chesapeake Bay Trust

Company Data:

NAICS Codes:

541620,

541330, 541320

DUNS # 621486026

CAGE # 5BGE8

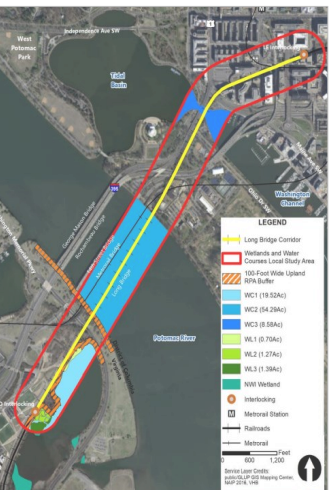
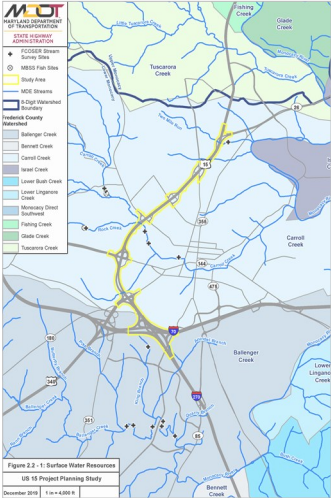
TIN # 52-1201324

SAM Registered

Contacts: Bridgette Garner, President, bridgettég@cri.biz ▪ Sarah Williamson, Vice President, sarahw@cri.biz



25 Old Solomons Island Road, Annapolis, MD 21401 ▪ www.coastal-resources.net ▪ 410-956-9000



NATIONAL ENVIRONMENTAL POLICY ACT (NEPA)



Coastal Resources, Inc. (CRI) has over 40 years of experience in environmental planning and NEPA compliance. CRI is able to assess a wide array of interconnected resources including identifying, quantifying, and analyzing both direct and indirect project impacts and has expertise in coordinating the sometimes divergent priorities of regulators, resource managers, and public stakeholders with project needs. Our NEPA documentation, planning and compliance related services include:

- Feasibility Studies
- Environmental Impact Statements
- Environmental Assessments
- Categorical Exclusions
- Re-Evaluations
- Natural Resources Technical Reports
- Avoidance, Minimization and Mitigation Reports
- Section 7 Biological Assessments
- Essential Fish Habitat Assessments
- Agency Coordination Plan Development
- Interagency coordination and Meeting Facilitation
- Stakeholder Identification
- Public Meeting Staffing

CRI works closely with project engineers and regulators early and throughout planning to identify potential environmental permitting issues and enhance the feasibility of projects by developing creative solutions that avoid and minimize potential impacts to sensitive resources.



For more information about our National Environmental Policy Act services please contact us at 410-956-9000 or visit www.coastal-resources.net.

CRI is a **small, woman-owned certified Minority Business Enterprise/Disadvantaged Enterprise (MBE/DBE/WBE/SBE/WOSB)** with over 40 years of experience in natural resource assessments, permitting, mitigation, restoration design, and monitoring.



Coastal Resources, Inc. 25 Old Solomons Island Road, Annapolis, MD 21401

WATERS OF THE U.S. DELINEATION AND ASSESSMENT



Coastal Resources, Inc. (CRI) routinely conducts waters of the U.S. delineations, functional assessments, and wetland monitoring in support of the federal and state regulations governing waters of the U.S., including wetlands. CRI has performed these studies throughout the Mid-Atlantic Region for a wide range of clients, including:

- Maryland, Virginia, District of Columbia and Delaware Transportation Agencies
- Washington Suburban Sanitary Commission
- Local Governments
- Electrical and Gas Utilities and Transmission Companies
- Railroads, including CSX and Amtrak
- Private Landowners

CRI staff hold current professional wetland certifications including the Society of Wetland Scientists (SWS), Professional Wetland Scientist (PWS), and Virginia Professional Wetland Delineator (PWD).



Our wetland scientists are often called in on difficult or controversial wetland delineations by other firms and/or our clients to provide additional expertise in defining the wetland boundary. CRI staff members provide professional training in wetland identification to other professionals in the field.

For more information about our Waters of the U.S. Delineation and Assessment services please contact us at 410-956-9000 or visit www.coastal-resources.net.

CRI is a **small, woman-owned certified Minority Business Enterprise/Disadvantaged Enterprise (MBE/DBE/WBE/SBE/WOSB)** with over 40 years of experience in natural resource assessments, permitting, mitigation, restoration design, and monitoring.



Coastal Resources, Inc. 25 Old Solomons Island Road, Annapolis, MD 21401

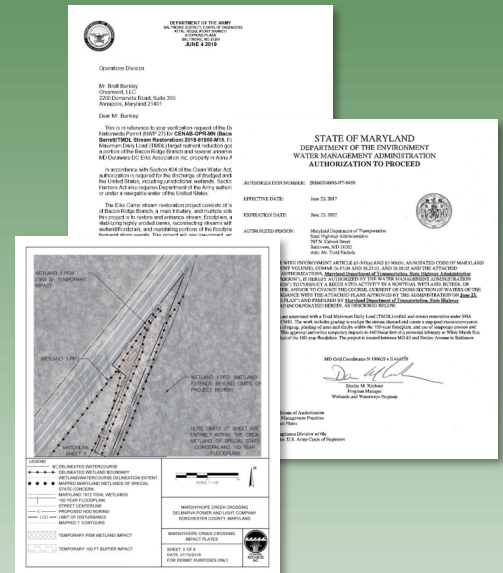
PERMITTING AND AGENCY COORDINATION



Coastal Resources, Inc. (CRI) has been obtaining wetland and waterways and other natural resource permits and approvals for over 35 years and has an intimate understanding of the regulatory requirements surrounding the many resources that could potentially be impacted by a project. Our permitting experience includes:

- Section 404/401 Joint Permit Process
- 401 Water Quality Certifications
- Forest Conservation Compliance
- Chesapeake Bay Critical Areas Approval
- Roadside Tree Permits

Through its long and varied experience, CRI has developed an excellent working relationship with regulatory agency personnel. We strive to facilitate compromise and mutually satisfying solutions that allow for project success as well as resource protection.



Recent Project Highlights:

CRI provided an Environmental Permitting Coordinator and staff team to manage more than 70 projects throughout 11 counties to support the MDOT SHA MS4 permits and TMDL Program, including stream restoration projects and outfall retrofits.

For more information about our Permitting and Agency Coordination services please contact us at 410-956-9000 or visit www.coastal-resources.net.

CRI is a **small, woman-owned certified Minority Business Enterprise/Disadvantaged Enterprise (MBE/DBE/WBE/SBE/WOSB)** with over 40 years of experience in natural resource assessments, permitting, mitigation, restoration design, and monitoring.



Coastal Resources, Inc. 25 Old Solomons Island Road, Annapolis, MD 21401

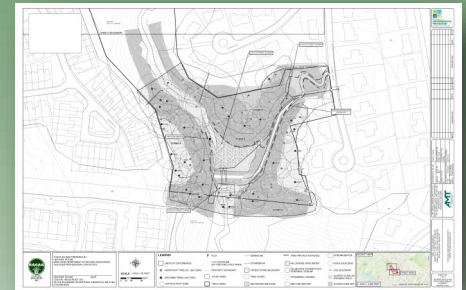
TREE AND FOREST CONSERVATION, ASSESSMENT, PLANNING, AND PERMITTING



Coastal Resources, Inc. (CRI) conducts field assessments and mapping of trees and forest resources in compliance with The Maryland Forest Conservation Act, Maryland Roadside Tree Law and to support impact analysis and environmental documentation. CRI has performed these studies throughout the Mid-Atlantic Region for a wide range of clients, including:

- Maryland, Virginia, District of Columbia and Delaware Transportation Agencies
- Washington Suburban Sanitary Commission
- Electrical and Gas Utilities and Transmission Companies
- Railroads, including CSX and Amtrak
- Private Landowners

CRI staff hold current certifications that are often required to conduct forest assessments, including DNR Forest Conservation Qualified Professionals, ISA Certified Arborists, and Landscape Architects.



Our forestry staff are qualified and experienced in development of all levels of:

- Forest Stand Delineations (FSD) and Exemptions
- Forest Conservation Plans (FCP) and Amendments
- Tree Survey
- Plot and transect sampling for vegetation characterization
- Forest Mitigation Plan Development
- Vegetation Management Plans
- Preparation of NRI/FSD and FCP Mapping

For more information about our Forest Stand Delineation and Conservation services please contact us at 410-956-9000 or visit www.coastal-resources.net.

CRI is a **small, woman-owned certified Minority Business Enterprise/Disadvantaged Enterprise (MBE/DBE/WBE/SBE/WOSB)** with over 40 years of experience in natural resource assessments, permitting, mitigation, restoration design, and monitoring.



Coastal Resources, Inc. 25 Old Solomons Island Road, Annapolis, MD 21401

SENSITIVE SPECIES SURVEYS AND HABITAT EVALUATIONS



Coastal Resources, Inc. (CRI) has specialized experience in the field assessment of sensitive habitats and species listed as rare, threatened and endangered (RTE) at the federal and state levels. Our scientists are experienced in conducting and preparing:

- Section 7 Biological Assessments
- Phase 1-3 Bog Turtle Surveys
- Essential Fish Habitat Assessments
- Bald Eagle Monitoring
- Vernal Pool Surveys
- Forest Interior Dwelling Bird Surveys
- RTE Plant Surveys
- Freshwater Mussel Surveys
- RTE Bat Surveys
- RTE Fish Relocation

Our highly qualified staff scientists are certified for surveying sensitive species, including Maryland, Delaware and Pennsylvania Qualified Bog Turtle Surveyors; Maryland Qualified Birders; USFWS Qualified Surveyors for the Small Whorled Pogonia; and Pennsylvania Wild Plant Management Permittees.

CRI staff has performed hundreds of RTE species surveys throughout the Mid-Atlantic Region and located new and previously unknown populations of sensitive species.



For more information about our Sensitive Species Surveys and Habitat Evaluations services please contact us at 410-956-9000 or visit www.coastal-resources.net.

CRI is a **small, woman-owned certified Minority Business Enterprise/Disadvantaged Enterprise (MBE/DBE/WBE/SBE/WOSB)** with over 40 years of experience in natural resource assessments, permitting, mitigation, restoration design, and monitoring.



Coastal Resources, Inc. 25 Old Solomons Island Road, Annapolis, MD 21401



BIOMONITORING AND WATER QUALITY SAMPLING



Coastal Resources, Inc. (CRI) scientists regularly develop and execute water resource assessment and analysis strategies to comprehensively evaluate resource conditions. Our in-depth water quality and biomonitoring services include:

- Tidal and Non-tidal Benthic Macroinvertebrate Sampling
- Fish Community Sampling and Analysis
- Fish Passage Identification and Assessment
- Fish/Mussel Salvage and Relocation
- Laboratory Identification of Freshwater and Estuarine Invertebrates
- In-situ Water Quality Sampling and Analysis
- Stream Habitat Assessment

Our staff hold industry standard certifications for biomonitoring, including Maryland Biological Stream Survey certifications and Society of Freshwater Science Benthic Macroinvertebrate Taxonomy certifications.

CRI's aquatic biologists have applied local and regional water quality monitoring protocols to stream and estuarine systems across the region, completing over 500 sampling events.



For more information about our Biomonitoring and Water Quality Monitoring services please contact us at 410-956-9000 or visit www.coastal-resources.net.

CRI is a **small, woman-owned certified Minority Business Enterprise/Disadvantaged Enterprise (MBE/DBE/WBE/SBE/WOSB)** with over 40 years of experience in natural resource assessments, permitting, mitigation, restoration design, and monitoring.



Coastal Resources, Inc. 25 Old Solomons Island Road, Annapolis, MD 21401



ESTUARINE SCIENCE AND ECOLOGY

Coastal Resources, Inc. (CRI) scientists regularly develop and execute water resource assessment and analysis strategies to comprehensively evaluate estuarine resource conditions. Our in-depth water quality and biomonitoring services include:

- Tidal Benthic Macroinvertebrate Sampling and Analysis
- Fish Community Sampling and Analysis
- Plankton Sampling and Analysis
- Laboratory Identification of Estuarine Invertebrates and Fish, including Plankton
- Anadromous Fish Passage Identification and Assessment
- Submerged Aquatic Vegetation Surveys
- Water Quality and Sediment Sampling and Analysis
- Essential Fish Habitat Assessments
- Section 7 Biological Assessments for Sturgeon
- Marine Mammal/Fish Kill Monitoring

In tidal waters, CRI staff are experienced in field sampling, processing, identification (to species), and data analysis of benthic macroinvertebrates in accordance with protocols to calculate the Chesapeake Bay Benthic Index of Biotic Integrity (B-IBI).

CRI's aquatic biologists have applied local and regional water quality monitoring protocols to stream and estuarine systems across the region, completing over 500 sampling events.



For more information about our Estuarine Science and Ecology services please contact us at 410-956-9000 or visit www.coastal-resources.net.

CRI is a **small, woman-owned certified Minority Business Enterprise/Disadvantaged Enterprise (MBE/DBE/WBE/SBE/WOSB)** with over 40 years of experience in natural resource assessments, permitting, mitigation, restoration design, and monitoring.





Coastal Resources, Inc. (CRI) believes in the watershed approach to restoration and is committed to supporting state, county, and local efforts to address within the watershed from the headwaters down. CRI scientists and engineers provide a full range of services to support every aspect of watershed studies from study design to implementation. Our in-depth watershed studies and assessment services include:

- Small Watershed Action Plans (SWAPS)
- Watershed and Sub Watershed Studies
- BMP Concept Designs and Cost Estimates
- Upland Assessments
- BMP Retrofit Evaluation and Design
- Watershed Mapping and GIS Data Management
- Non Rooftop Disconnection Evaluation
- TMDL Crediting - Impervious Area and Pollution Reduction Calculations
- Community Outreach and Public Meetings

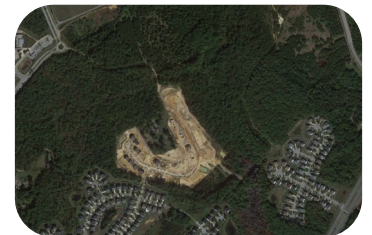
CRI staff hold Professional Engineer (PE) licenses in Maryland, Pennsylvania, Virginia, West Virginia, and the District of Columbia, Rosgen level I-IV training certifications, and Landscape Architect (LA) licenses in Maryland and Virginia.



CRI has performed watershed assessments throughout the region and has completed over 60 miles of stream assessments of 1st, 2nd, 3rd, and 4th order streams.

For more information about our Watershed Studies and Assessment services please contact us at 410-956-9000 or visit www.coastal-resources.net.

CRI is a **small, woman-owned certified Minority Business Enterprise/Disadvantaged Enterprise (MBE/DBE/WBE/SBE/WOSB)** with over 40 years of experience in natural resource assessments, permitting, mitigation, restoration design, and monitoring.



Coastal Resources, Inc. 25 Old Solomons Island Road, Annapolis, MD 21401

STREAM RESTORATION DESIGN AND MONITORING



Coastal Resources, Inc. (CRI) engineers and scientists routinely assess stability of streams and provide conceptual to final stream restoration design services with an emphasis on natural solutions and functional uplift. Our in-depth stream restoration services include:

- Geomorphic Assessment Surveys and Bank Stability Studies
- Stream Restoration and Relocation Assessment and Design
- Pre- and Post-Construction Stream Monitoring
- Functional Uplift Evaluation
- Soil Bulk Density Sampling
- Hydrologic and Hydraulic Modeling for Stream Restoration Design
- Fish Passage Assessment and Mitigation
- Watershed Study and Assessment
- HEC-RAS 2D Modeling
- Landscape Design for Stream Restoration
- Compensatory Stream Mitigation Site Searches
- In-Stream Structure Stabilization Assessments
- TMDL Pollutant Reduction Load Estimates

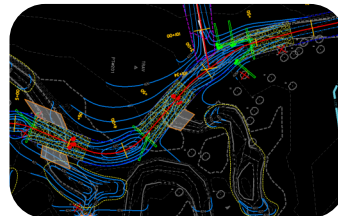
CRI staff hold Professional Engineer (PE) licenses in Maryland, Pennsylvania, Virginia, West Virginia, and the District of Columbia, Rosgen level I-IV training certifications, and Landscape Architect (LA) licenses in Maryland and Virginia.

Our team of highly trained staff is experienced in both the Coastal Plain and Piedmont physiographic regions. CRI tailors each design to accommodate site specific constraints and client needs.



For more information about our Stream Restoration Design and Monitoring services please contact us at 410-956-9000 or visit www.coastal-resources.net.

CRI is a **small, woman-owned certified Minority Business Enterprise/Disadvantaged Enterprise (MBE/DBE/WBE/SBE/WOSB)** with over 40 years of experience in natural resource assessments, permitting, mitigation, restoration design, and monitoring.



Coastal Resources, Inc. 25 Old Solomons Island Road, Annapolis, MD 21401



WETLAND MITIGATION AND MONITORING



Coastal Resources, Inc. (CRI) engineers and scientists have provided design and monitoring services for a wide variety of wetland creation and enhancement projects. Our wetland design and monitoring services include:

- Compensatory Wetland Mitigation Site Searches
- Detailed Site Suitability Assessment, including Groundwater and Invasive Species Inventory
- Complete Wetland Design, including Water Budgets and Planting, E&S, and Grading Plans
- Phase II Mitigation Plans
- Post-Construction Wetland Mitigation Monitoring, including Vegetation Sampling, Soils Analysis, and Hydrologic Assessment
- Landscape Design
- Invasive Species Control Plan and Monitoring
- Post Construction Monitoring

CRI staff hold Professional Engineer (PE) licenses in Maryland, Pennsylvania, Virginia, West Virginia, and the District of Columbia, Landscape Architect (LA) licenses in Maryland and Virginia, and Professional Wetland Scientist (PWS) licenses.



For more information about our Wetland Mitigation and Monitoring services please contact us at 410-956-9000 or visit www.coastal-resources.net.

CRI is a small, woman-owned certified Minority Business Enterprise/Disadvantaged Enterprise (MBE/DBE/WBE/SBE/WOSB) with over 40 years of experience in natural resource assessments, permitting, mitigation, restoration design, and monitoring.



Coastal Resources, Inc. 25 Old Solomons Island Road, Annapolis, MD 21401



WATER RESOURCES ENGINEERING

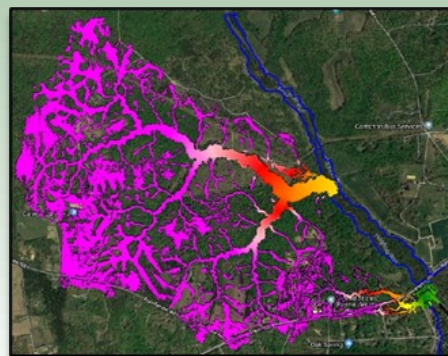
Coastal Resources, Inc. (CRI) engineers and scientists have provided innovative solutions to stormwater management, as well as hydrologic and hydraulic modeling and erosion and sediment control design. Our in-depth water resources services include:

- Stormwater Management Planning, Design, Inspection, and Remediation
- Erosion and Sediment Control Design and Permitting
- Flood Risk Analysis
- County and FEMA Floodplain Approvals
- BMP Site Searches
- Watershed Studies and Planning
- Highway and Urban Drainage Design
- Multi-Dimensional Hydrologic and Hydraulic Modeling
- Landscape Design for Stormwater Management Facilities
- Floodplain Mapping

Our staff hold Professional Engineer (PE) licenses in Maryland, Virginia, Pennsylvania, West Virginia, and the District of Columbia, and Landscape Architect (LA) licenses in Maryland and Virginia.

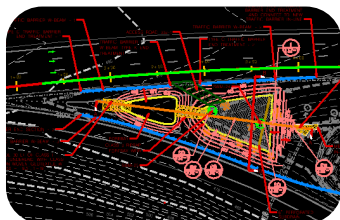
Extensive Software Experience

- AutoCAD Civil 3D
- MicroStation
- HEC-RAS 1D/2D (Steady & Unsteady)
- HEC-HMS
- TR-20 & TR-55
- PC SWMM
- GIS HYDRO NXT



For more information about our Water Resources Engineering services please contact us at 410-956-9000 or visit www.coastal-resources.net.

CRI is a small, woman-owned certified Minority Business Enterprise/Disadvantaged Enterprise (MBE/DBE/WBE/SBE/WOSB) with over 40 years of experience in natural resource assessments, permitting, mitigation, restoration design, and monitoring.





ENVIRONMENTAL CONSTRUCTION INSPECTION

Coastal Resources, Inc. (CRI) has extensive experience providing environmental/compliance inspection services for construction projects in the Mid-Atlantic Region, including inspections of grading, landscaping, and erosion and sediment controls to ensure compliance with the contract documents and permit conditions.

Our Construction Inspection staff are certified and experienced in the following fields:

- SHA E&S Control Yellow Card
- MDE E&S Control Responsible Personnel
- OSHA10, First Aid, and CPR/AED
- Environmental Permit Compliance
- Contract Document Compliance
- Stream Restoration
- Wetland Mitigation
- Project Documentation
- Project Coordination
- Virginia DEQ Certified
- OSHA HAZWOPER Certified

CRI is often requested to provide inspection services for the most complicated projects throughout the region. Our team of knowledgeable staff works directly with construction staff, engineers and state and federal inspectors to ensure efficiency and site compliance.



Customer Testimonial:

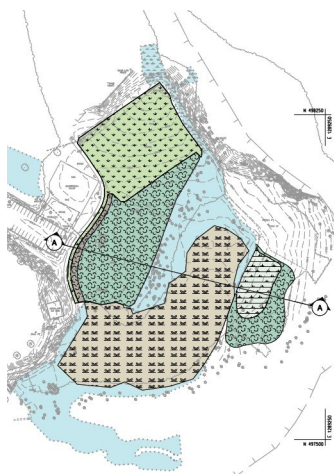
"Just listening to the client sing your praises on the Weekly Call now. Thank you for all your support and hard work on these projects. It really is appreciated by us and the client!" - Megan Welling, McCormick Taylor

For more information about our Environmental Construction Inspection services please contact us at 410-956-9000 or visit www.coastal-resources.net.

CRI is a **small, woman-owned certified Minority Business Enterprise/Disadvantaged Enterprise (MBE/DBE/WBE/SBE/WOSB)** with over 40 years of experience in natural resource assessments, permitting, mitigation, restoration design, and monitoring.



Coastal Resources, Inc. 25 Old Solomons Island Road, Annapolis, MD 21401



LANDSCAPE ARCHITECTURE

Coastal Resources, Inc. (CRI) has experience in providing landscape architecture services for a variety of clients. CRI's licensed landscape architects, DNR Forest Conservation Qualified Professional, and arborists are accomplished at evaluating the aesthetic of a site, determining the appropriate planting species/density, and preparing landscape design documents to provide our clients with a successful project. Types of services CRI provides include:

- Landscape Design/Reforestation
- Stream Restoration Projects
- Stormwater Management Planting
- Environmental Site Design
- Wetland Creation/Enhancement
- TMDL Tree Planting
- Urban Streetscapes
- Critical Area Planting

CRI staff hold current certifications that are essential to provide appropriate landscape plans including Licensed Landscape Architects, DNR Forest Conservation Qualified Professionals, and ISA Certified Arborists.

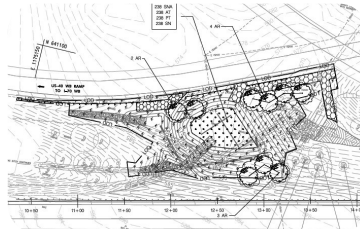


Our landscape architecture staff have experience providing the following services:

- Streetscapes
- Vegetation inventories
- Concept Development
- Design Plan Development including Plans, Specifications and Estimates
- Pollutant Removal Calculations
- Schematic Cross Sections and Typical Sections
- Forest Mitigation Plan Development
- Vegetation Management Plans
- Coordination with Local Communities and Jurisdictions

For more information about our Landscape Architecture services please contact us at 410-956-9000 or visit www.coastal-resources.net.

CRI is a small, woman-owned certified Minority Business Enterprise/Disadvantaged Enterprise (MBE/DBE/WBE/SBE/WOSB) with over 40 years of experience in natural resource assessments, permitting, mitigation, restoration design, and monitoring.



Coastal Resources, Inc. 25 Old Solomons Island Road, Annapolis, MD 21401

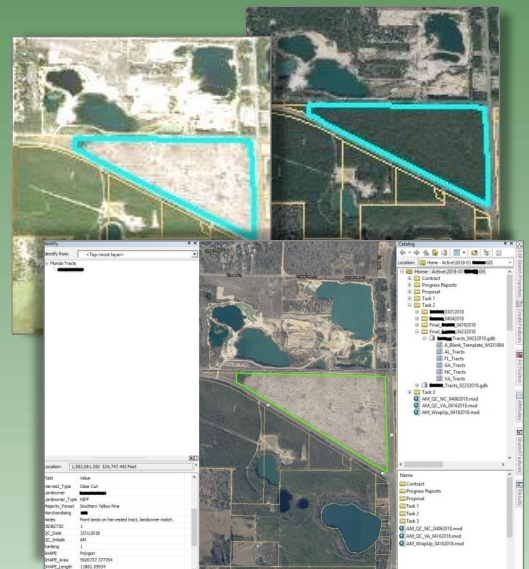
GEOGRAPHIC INFORMATION SYSTEMS, COMPUTER-AIDED DESIGN, AND DATA ANALYSIS



Coastal Resources, Inc. (CRI) has been utilizing GIS and CAD for design, analysis, reporting, and visualization for over 15 years. Our staff are highly trained in the latest GIS, GPS, and CAD software to support all project needs. Our services includes:

- Geospatial Data Collection
- Landscape, Hydrology, and Imagery Analysis
- Database Development and Management
- Cartographic Production
- Scripting
- Statistical Analysis

CRI works closely with clients to determine the best way to collect, store, manage, and display data to convey information clearly and concisely for end users. We strive for the highest level of data integrity, and employ rigorous QA/QC protocols for all data and mapping products.

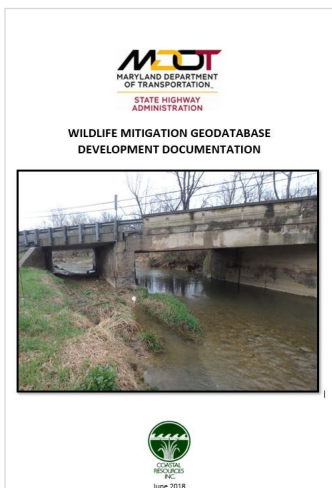
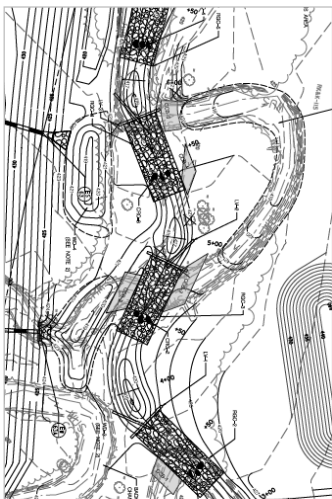
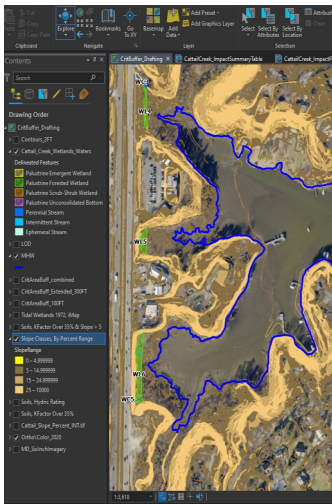
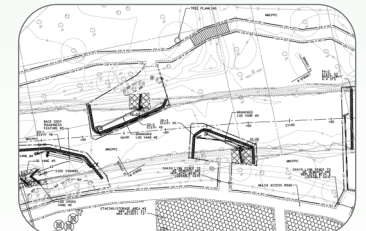
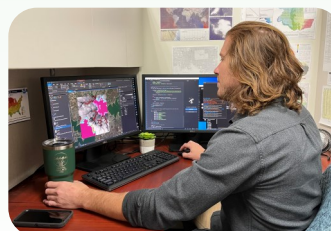
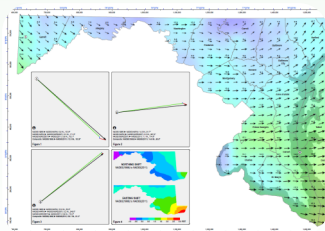


Software Experience:

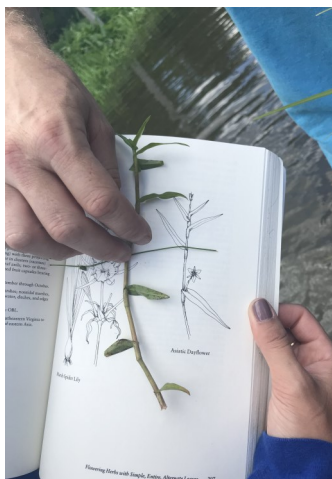
- Esri© ArcGIS Desktop/Pro, ArcGIS Online, Field Maps, and Survey 123
- Trimble© and SX Blue© GPS/GNSS
- Python, VB, and R Scripting Languages
- Bentley© MicroStation and Autodesk AutoCAD©

For more information about our GIS, CAD, and Data Analysis services please contact us at 410-956-9000 or visit www.coastal-resources.net.

CRI is a **small, woman-owned certified Minority Business Enterprise/Disadvantaged Enterprise (MBE/DBE/WBE/SBE/WOSB)** with over 40 years of experience in natural resource assessments, permitting, mitigation, restoration design, and monitoring.



Coastal Resources, Inc. 25 Old Solomons Island Road, Annapolis, MD 21401



ENVIRONMENTAL TRAINING

Coastal Resources, Inc. (CRI) provides environmental professionals with a variety of environmental training programs for staff development. Our highly experienced staff offer training in the following disciplines:

- Wetland Delineation
- Wetland Plant Identification
- Grasses, Sedges, and Rushes
- Winter Woody Plant Identification
- Benthic Macroinvertebrate Identification
- Reptiles and Amphibians
- Raptor Nest Identification and Documentation

Our instructors have over 30 years of combined experience and are often called in on difficult or controversial projects by other firms and/or our clients to provide additional expertise.



CRI has provided environmental training to professionals from federal, state, and local government; non-profit organizations; and numerous private consulting firms in the Mid-Atlantic Region.

Customer Testimonial:

"This course was fantastic and well balanced between lectures, field investigations and keying out plants, with nice breaks in between. The binder is super helpful."

Jennifer Powers, Wilson T. Ballard Company

For more information about our Environmental Training services please contact us at 410-956-9000 or visit www.coastal-resources.net.

CRI is a **small, woman-owned certified Minority Business Enterprise/Disadvantaged Enterprise (MBE/DBE/WBE/SBE/WOSB)** with over 40 years of experience in natural resource assessments, permitting, mitigation, restoration design, and monitoring.



Coastal Resources, Inc. 25 Old Solomons Island Road, Annapolis, MD 21401