

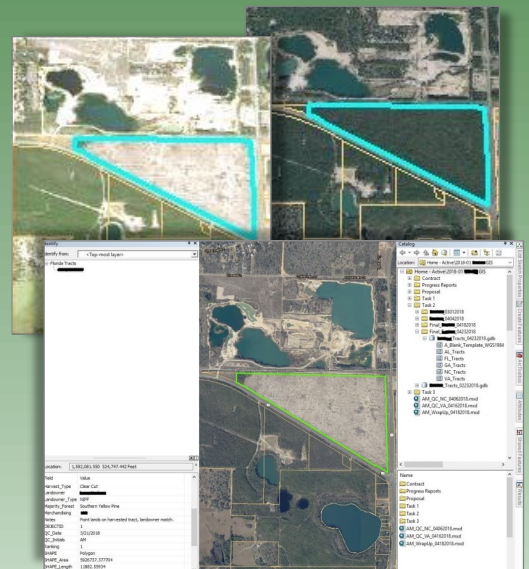
GEOGRAPHIC INFORMATION SYSTEMS, COMPUTER-AIDED DESIGN, AND DATA ANALYSIS



Coastal Resources, Inc. (CRI) has been utilizing GIS and CAD for design, analysis, reporting, and visualization for over 15 years. Our staff are highly trained in the latest GIS, GPS, and CAD software to support all project needs. Our services includes:

- Geospatial Data Collection
- Landscape, Hydrology, and Imagery Analysis
- Database Development and Management
- Cartographic Production
- Scripting
- Statistical Analysis

CRI works closely with clients to determine the best way to collect, store, manage, and display data to convey information clearly and concisely for end users. We strive for the highest level of data integrity, and employ rigorous QA/QC protocols for all data and mapping products.

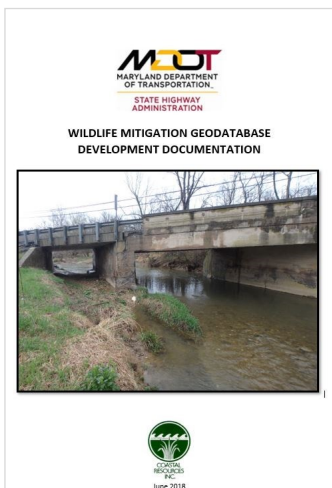
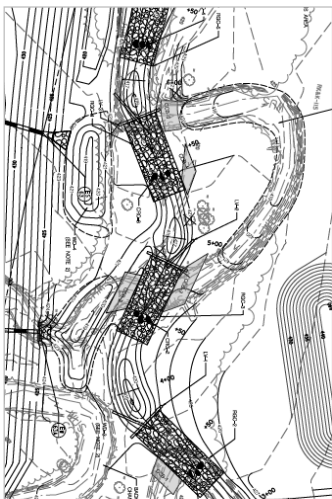
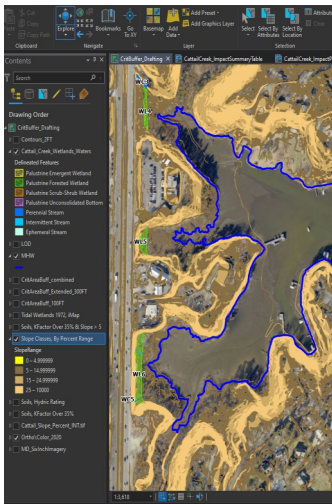
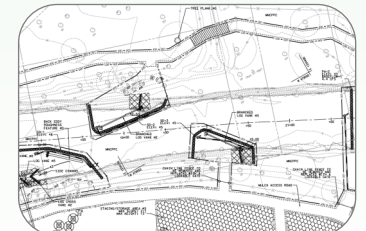
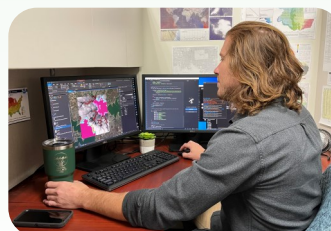
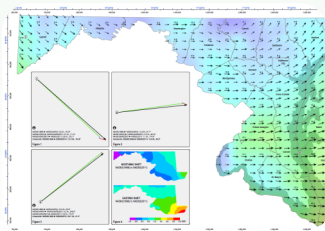


Software Experience:

- Esri© ArcGIS Desktop/Pro, ArcGIS Online, Field Maps, and Survey 123
- Trimble© and SX Blue© GPS/GNSS
- Python, VB, and R Scripting Languages
- Bentley© MicroStation and Autodesk AutoCAD©

For more information about our GIS, CAD, and Data Analysis services please contact us at 410-956-9000 or visit www.coastal-resources.net.

CRI is a **small, woman-owned certified Minority Business Enterprise/Disadvantaged Enterprise (MBE/DBE/WBE/SBE/WOSB)** with over 40 years of experience in natural resource assessments, permitting, mitigation, restoration design, and monitoring.



Coastal Resources, Inc. 25 Old Solomons Island Road, Annapolis, MD 21401